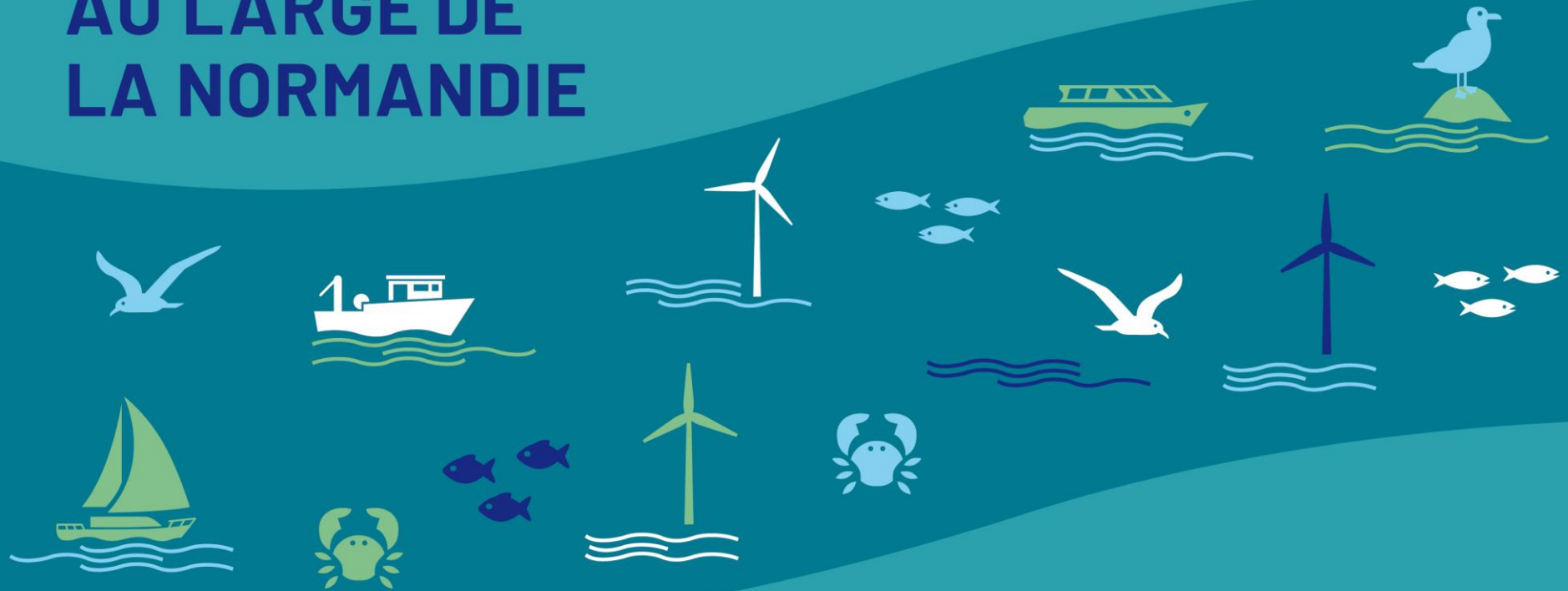


ÉOLIENNES EN MER AU LARGE DE LA NORMANDIE



Présentation Étude pêche

Le Tréport – 31 janvier 2020



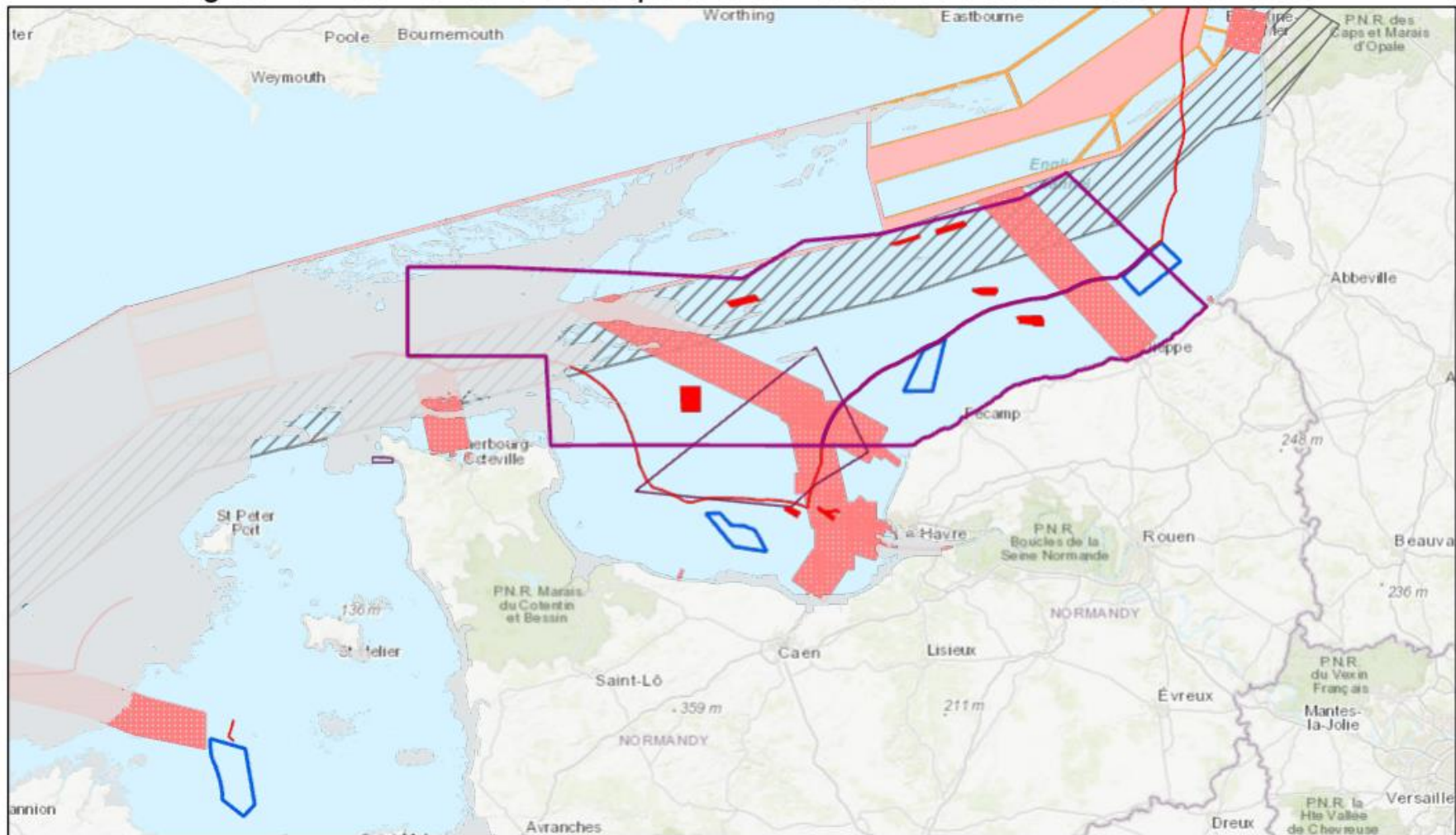
Partage des connaissances

Comment représenter les activités de pêche professionnelle en mer ? :

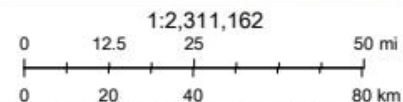
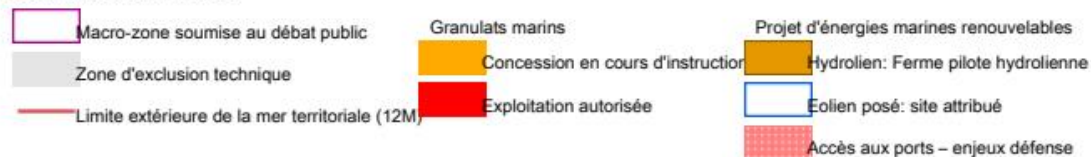
- Utilisation des balises de suivi des pêches (VMS)
- Ajout des outils de suivi des captures (SACROIS)



Energies Marines Renouvelables: porté à connaissance des données mobilisées

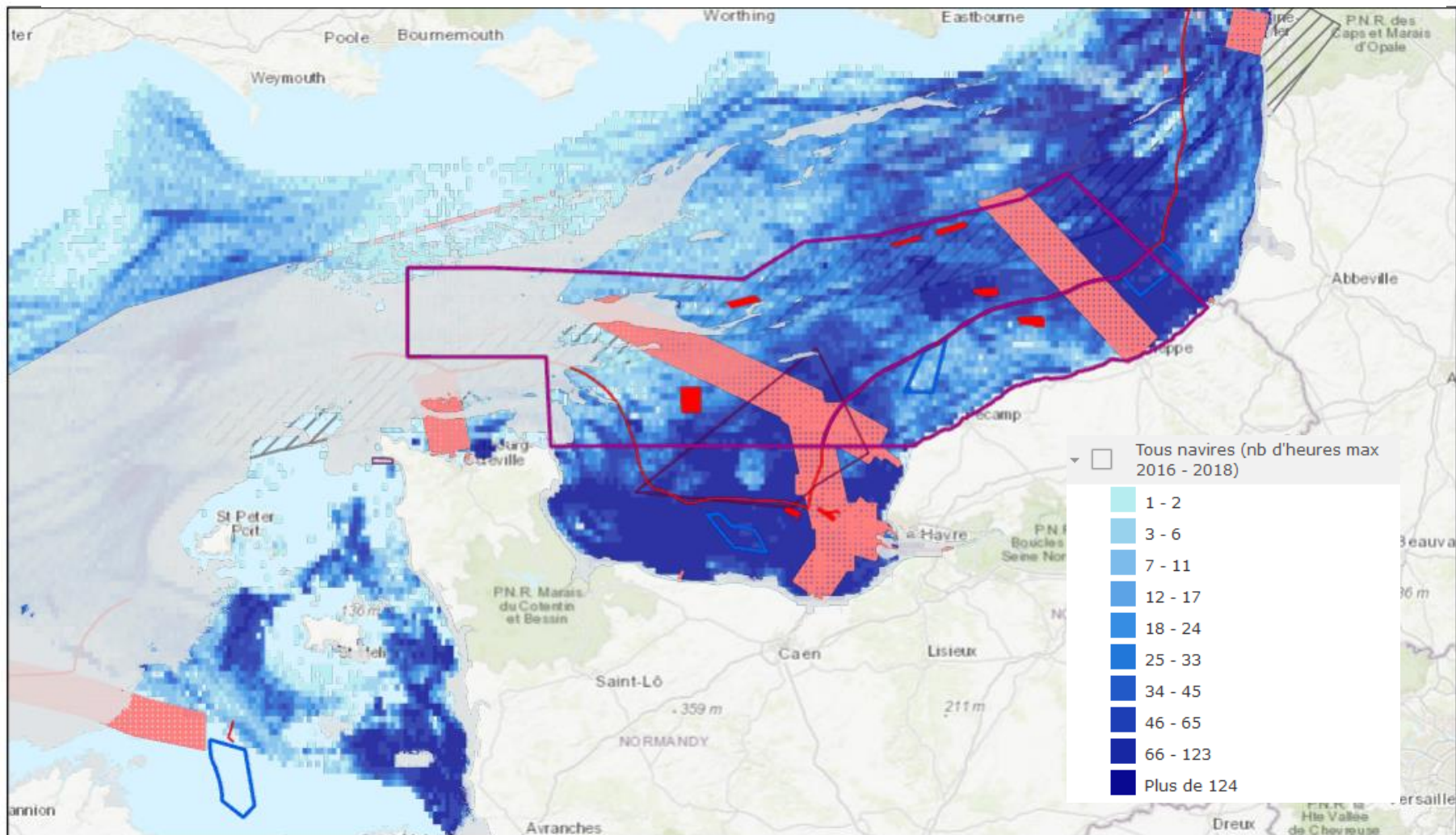


23/01/2020 à 11:44:00



Sources: Esri, HERE, Garmin, Intermap, increment P Corp., GEBCO, USGS, FAO, NPS, NRCAN, GeoBase, IGN, Kadaster NL, Ordnance Survey, Esri Japan, METI, Esri China (Hong Kong), (c) OpenStreetMap contributors, and the GIS User Community

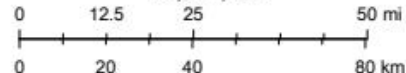
Spatialisation VMS tous navires , nombres d'heures/an de présence



23/01/2020 à 11:48:18

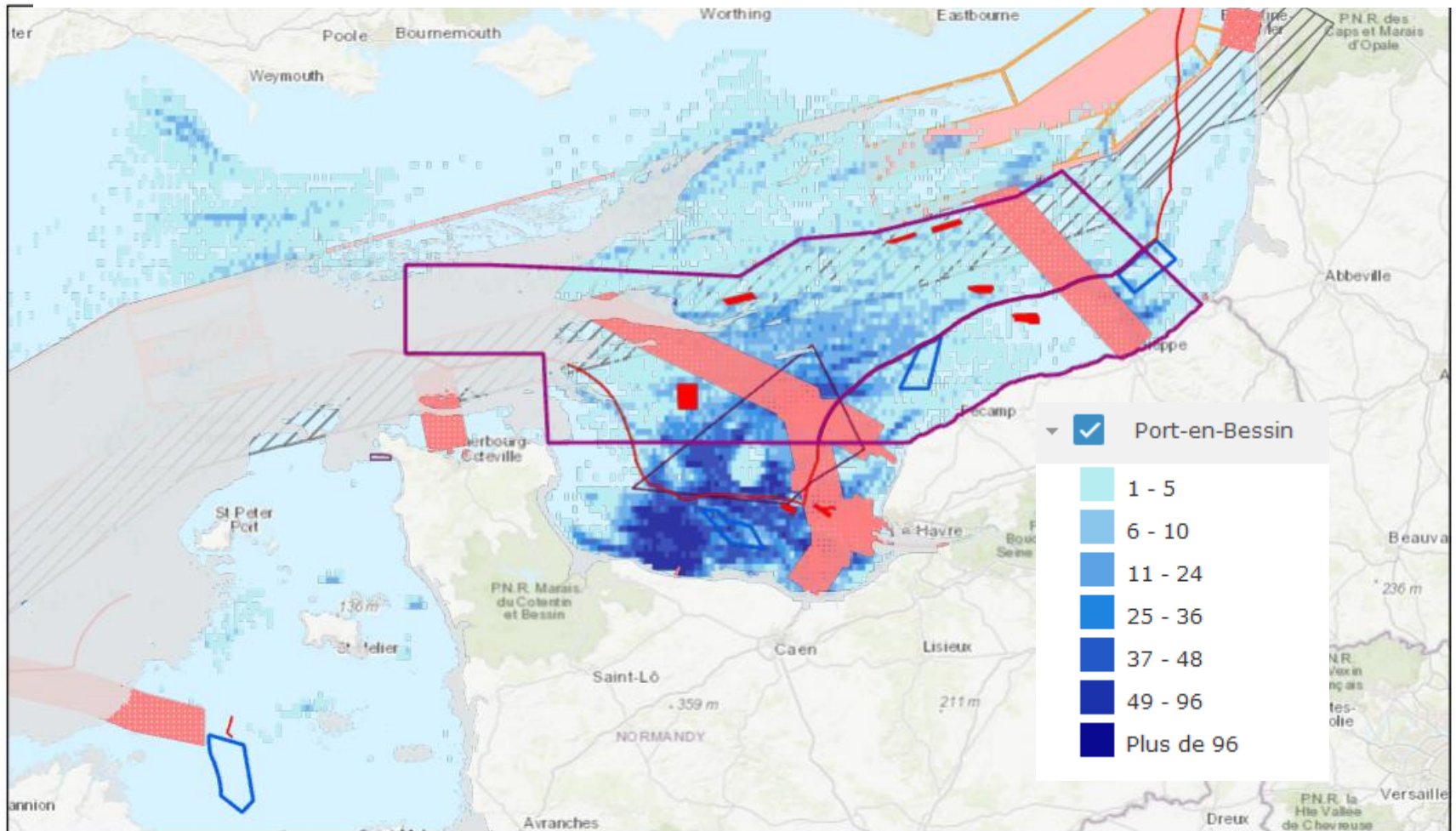
- Macro-zone soumise au débat public
- Zone d'exclusion technique
- Limite extérieure de la mer territoriale (12M)
- Granulats marins
- Concession en cours d'instruction
- Exploitation autorisée
- Projet d'énergies marines renouvelables
- Hydrolien: Ferme pilote hydrolienne
- Eolien posé: site attribué
- Accès aux ports – enjeux défense

1:2,311,162



Sources: Esri, HERE, Garmin, Intermap, increment P Corp., GEBCO, USGS, FAO, NPS, NRCAN, GeoBase, IGN, Kadaster NL, Ordnance Survey, Esri Japan, METI, Esri China (Hong Kong), (c) OpenStreetMap contributors, and the GIS User Community

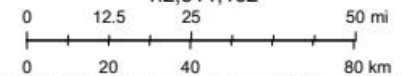
Spatialisation VMS, navires de Port-en-Bessin, nombres d'heures/an de présence



23/01/2020 à 11:49:52

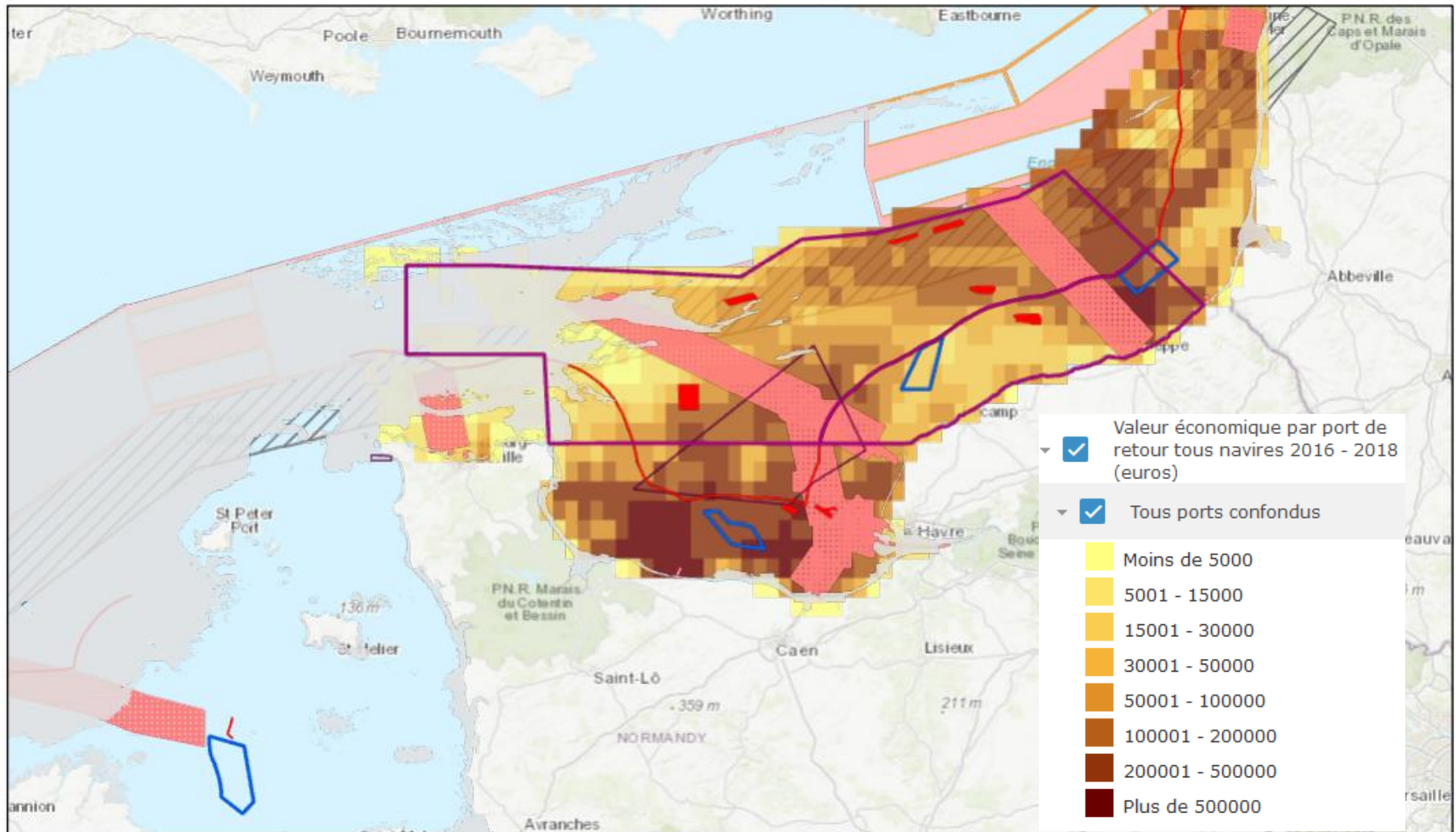


1:2,311,162

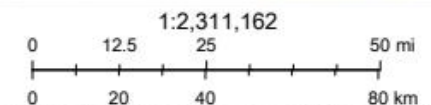
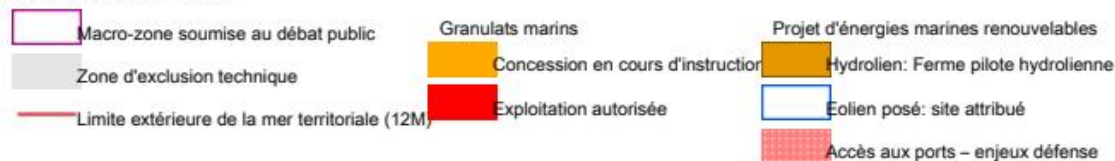


Sources: Esri, HERE, Garmin, Intermap, increment P Corp., GEBCO, USGS, FAO, NPS, NRCAN, GeoBase, IGN, Kadaster NL, Ordnance Survey, Esri Japan, METI, Esri China (Hong Kong), (c) OpenStreetMap contributors, and the GIS User Community

Valeur économique des zones tous ports confondus

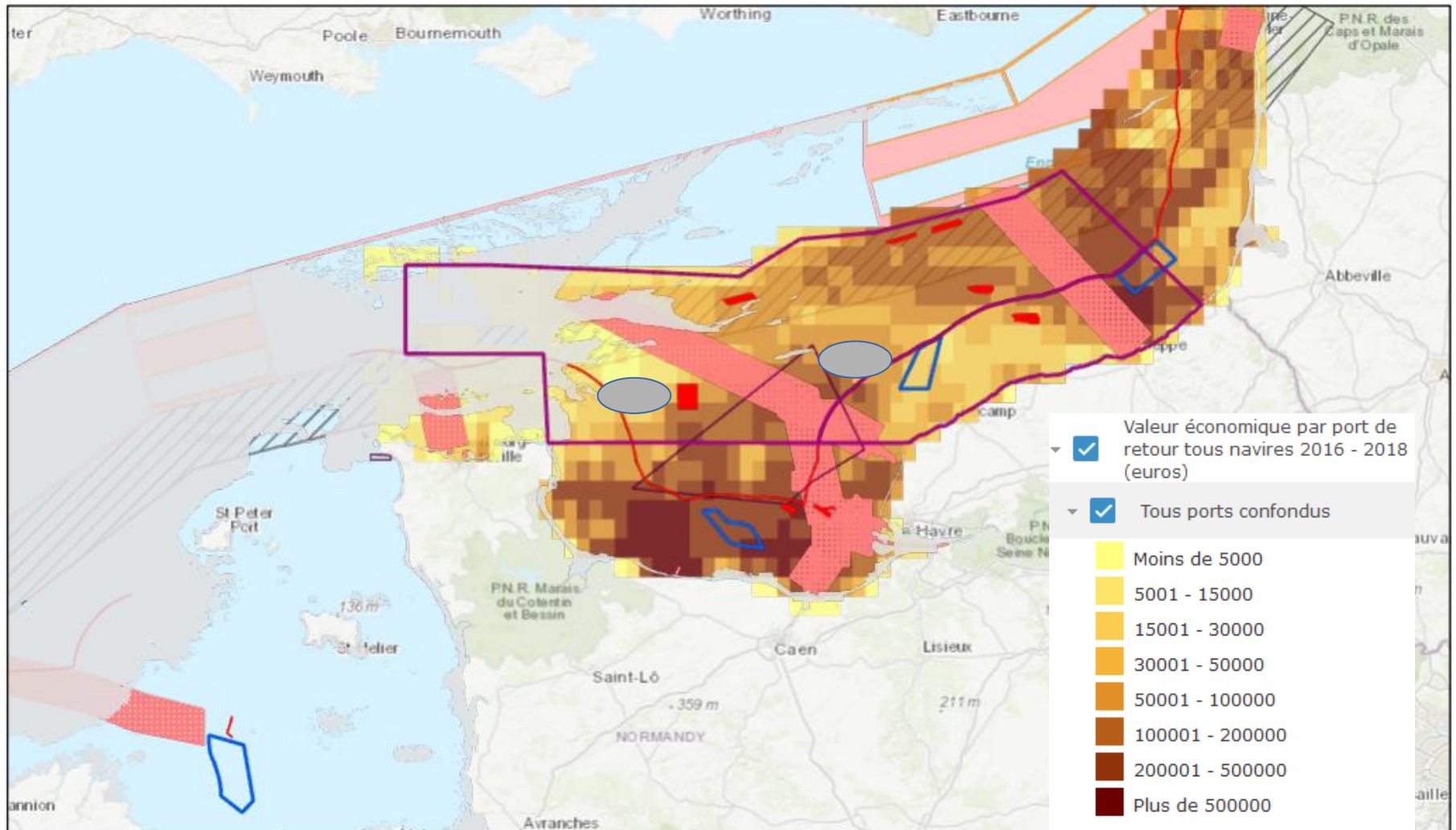


23/01/2020 à 11:40:21

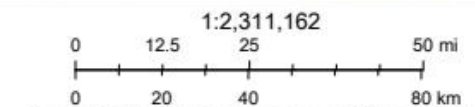
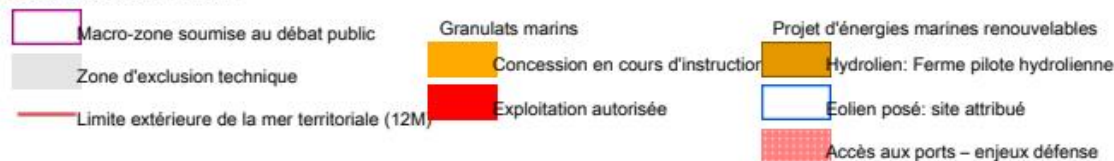


Sources: Esri, HERE, Garmin, Intermap, increment P Corp., GEBCO, USGS, FAO, NPS, NRCAN, GeoBase, IGN, Kadaster NL, Ordnance Survey, Esri Japan, METI, Esri China (Hong Kong), (c) OpenStreetMap contributors, and the GIS User Community

Valeur économique des zones tous ports confondus

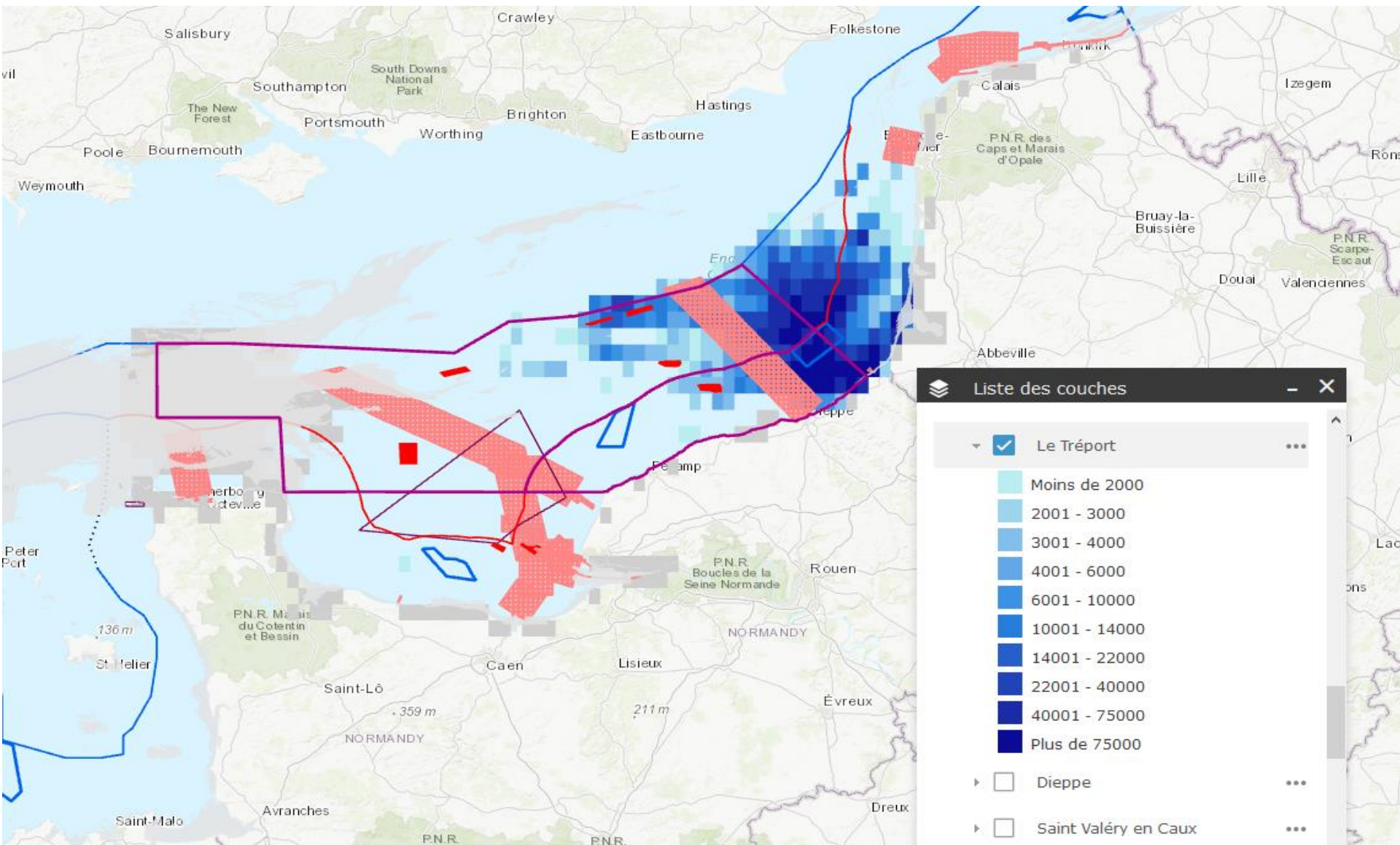


23/01/2020 à 11:40:21

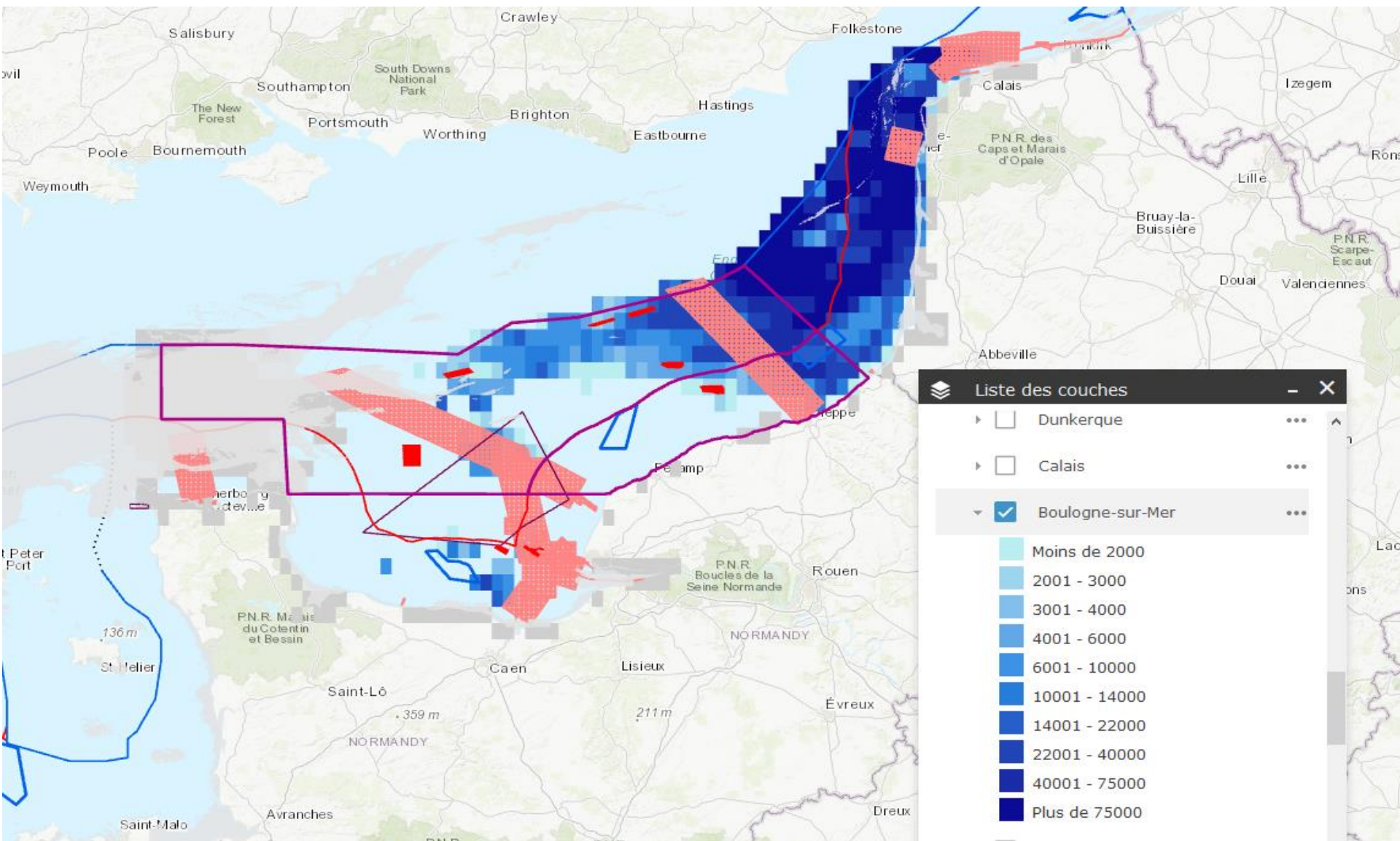


Sources: Esri, HERE, Garmin, Intermap, increment P Corp., GEBCO, USGS, FAO, NPS, NRCAN, GeoBase, IGN, Kadaster NL, Ordnance Survey, Esri Japan, METI, Esri China (Hong Kong), (c) OpenStreetMap contributors, and the GIS User Community

Valeur économique des zones, port de retour : Le Tréport



Valeur économique des zones, port de retour : Le Tréport



Merci de votre attention

Des questions ?

[Accès cartographie](#)